

Academi
Hywel Teifi


Prifysgol Abertawe
Swansea University

Why study through the medium of Welsh?



It's a competitive workplace! Give yourself the best opportunity - study through the medium of Welsh!

The best education

When you leave school or college, continuing to study through the medium of Welsh will give you the best education. There are opportunities for students who are confident and fluent in the language as well as opportunities for those who are less confident or are learners. There is something that will suit everyone: from degree courses which are completely through the medium of Welsh to courses where some modules are offered in Welsh, or in some departments it is possible to have Welsh language seminars and tutorials for modules which are mainly taught through the medium of English. You have a right to present coursework and sit exams through the medium of Welsh, even if you have chosen to complete courses through the medium of English. By continuing to study your course completely or partly through the medium of Welsh, you will develop your skills in two languages – Welsh and English – which will open doors for you when you leave the university.

The best teaching methods

A number of the latest teaching methods are used to teach Swansea University's Welsh-medium modules which include multimedia teaching materials, video conferencing, residential courses, hands-on sessions which are organised by professionals and online resources. These support more traditional learning methods such as attending lectures and the library. Swansea University has an excellent teaching space dedicated for Welsh-medium education, thanks to our partnership with the Coleg Cymraeg Cenedlaethol. Through this dedicated space and the video-conferencing equipment housed within it, our students can follow Welsh-medium modules taught at other universities.

The best chance to get a job

The ability to speak Welsh is a huge advantage for anyone who is looking for work. The Welsh language has official status in Wales which means that a large number of employers in Wales are searching for bilingual graduates. The ability to speak Welsh is classed as an extra skill in the workplace, in Wales and beyond. Therefore, studying through the medium of Welsh or bilingually in Swansea University could help you when you are looking for work.





International opportunity

We are able to offer unique international experiences and work placements to students as International connections are all important to Swansea University. A number of our Welsh-medium lecturers are worldwide experts in their field.

Funding opportunities

Students who study courses or modules bilingually or completely through the medium of Welsh have an excellent opportunity to receive financial support. The majority of our courses are eligible for the Coleg Cymraeg Cenedlaethol's scholarships and Welsh-medium scholarships and bursaries which are offered by the university. As well as this, remember; research shows that the average salaries of bilingual workers are generally higher than those of monolingual workers.

An opportunity to develop

Using your Welsh can lead to improving your education, your skills and your chance of finding a job, but don't forget about the opportunity that you have to personally develop by being a part of Swansea University's Welsh-language community. The ability to communicate in more than one language keeps the mind healthy as it helps you to become more creative, further develop your thinking skills and improve your mathematical skills.

An opportunity too good to waste!

What is Academi Hywel Teifi?



Academi Hywel Teifi is a unique institute established by Swansea University in 2010 in memory of Professor Hywel Teifi Edwards, a former Professor of Welsh at the university and one of the nation's greats.








- it is a centre of excellence for studying the Welsh language, its literature and culture
- it is home to progressive degree schemes which respond to industry demands in Media Studies and Public Relations through the medium of Welsh
- it promotes Welsh-medium teaching and research across the subjects offered by the university
- it works to ensure a more prominent place for the language in all aspects of the university's life and in south-west Wales

Whilst the Academi is home to a core team of staff, it also provides a community for all those offering Welsh-medium provision across the university and to the thousands of Welsh-speaking students on campus. Furthermore, the Swansea University Branch of the Coleg Cymraeg Cenedlaethol and the South-West Wales Welsh for Adults Centre are situated within the Academi.

Through various activities the Academi supports, increases and enriches Welsh-medium provision and research at Swansea University in order to ensure that the University's students experience the best of both worlds – a Welsh and Welsh-language experience at a university which has multicultural and international connections which are second to none.



Scholarships and Prizes

Excellence Scholarship £3000		Who? All students who gain AAA in their A Level examinations (or equivalent)
Merit Scholarship £2000		Who? All students who gain AAB in their A Level examinations (or equivalent)
Welsh-medium undergraduate scholarship 15 scholarships worth £300		Who? Students (Levels 4-6) looking to study at least 40 credits through the medium of Welsh where opportunity exists
Welsh-medium undergraduate bursaries 8 bursaries worth £100		Who? Students (Levels 4-6) who are studying at least 5 credits through the medium of Welsh in one semester
Main Scholarship Y Coleg Cymraeg Cenedlaethol £3000		Who? Students who study at least 66% of the course, that is 80 credits a year, through the medium of Welsh
Incentive Scholarship Y Coleg Cymraeg Cenedlaethol £1500		Who? Students who study at least 33% of the course, that is 40 credits a year, through the medium of Welsh
William Salesbury Scholarship £5000		Who? Students who wish to study a University Course that is available entirely through the medium of Welsh


For more information and guidelines on how to apply, visit:
www.abertawe.ac.uk/academihywelteifi/ysgoloriaethau

Prizes for the best Welsh-medium Students

An annual prize is offered to the best performing Welsh-medium student in each of the University's seven Colleges or Schools. Each winner will receive a prize of £150.

News and information about the Academi's activities and events are available at www.abertawe.ac.uk/academihywelteifi

Follow us on

 Academi Hywel Teifi

 @AcademiHTeifi



Swansea University's Branch of the Coleg Cymraeg Cenedlaethol



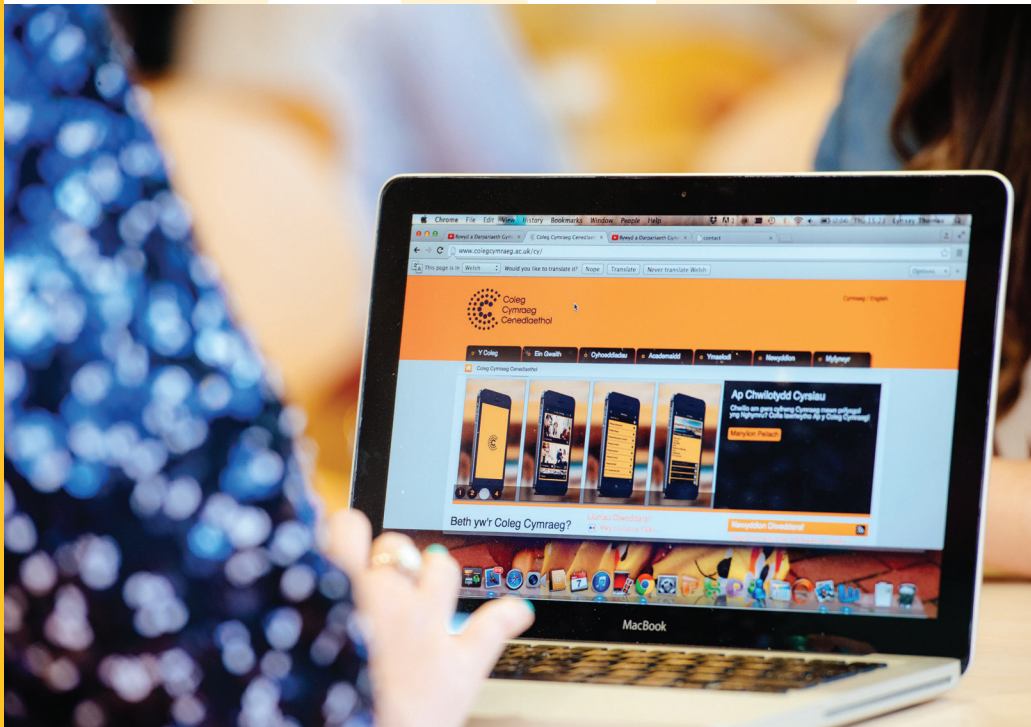
Coleg
Cymraeg
Cenedlaethol

Swansea University's branch of the Coleg Cymraeg Cenedlaethol is located within Academi Hywel Teifi. Its main aim is to provide advice and support for students who study and socialize through the medium of Welsh and staff who provide Welsh-medium courses.

The University offers over 25 courses which are eligible for the Coleg Cymraeg Cenedlaethol's Main Scholarship and over 40 courses which are eligible for the Incentive Scholarship. The University continues to develop its Welsh language provision in order to provide students with more choice when they study here.

The branch arranges a variety of activities throughout the year, including events for schools, welcome events for freshers, events for Welsh-speaking students, discussion forums, gigs and lots more!

Remember to become a member of the branch in order to take advantage of all the Welsh-medium opportunities that the Coleg Cymraeg and the University can offer you - membership is free!



Kayleigh Jones, 19, received the Main Scholarship from the Coleg Cymraeg Cenedlaethol to study for a BSc in Mathematics and Welsh.

"I chose to study a BSc in Mathematics and Welsh because I couldn't decide between the two. In college, I loved Welsh and wanted to continue to develop my skills. However, I also found Maths interesting and I loved the challenge that comes with the subject. After completing a period of work experience in the University and attending a Welsh second language summer school and open days, I believed that Swansea was the place for me. The University staff are lovely and the location is perfect. I received the Main Scholarship from the Coleg Cymraeg Cenedlaethol and receiving this scholarship has opened many doors for me as employers value it. I have enjoyed my university experience so far. I have met lots of lovely people and I have grown as a person. I have also tried many new things such as blogging. University life can be challenging but it is a great experience and I am very grateful that I have been given the chance to study at Swansea."



Dominic Farr, 21, received an Incentive Scholarship from the Coleg Cymraeg Cenedlaethol to study for a BA in Geography and French.

"The best thing about my course was studying two subjects and studying different topics every day made the lectures interesting. I have developed many new skills during my time at the University and I have done this by studying through the medium of Welsh. I believe that individuals have a better understanding of a subject when taught through their mother tongue, also, the class sizes are smaller so the lecturers have more time to discuss and explain the work to the students. In my opinion, there are a lot more opportunities to use the Welsh language on the campus now and I am very pleased that I have had the opportunity to study through the medium of Welsh as it is an extra skill that I can boast to future employers when I am job hunting."



Postgraduate scholarships

If you are considering continuing your studies after you graduate, the Coleg Cymraeg Cenedlaethol offers scholarships for students who wish to study masters courses – either completely or partly – through the medium of Welsh. Each of these scholarships is worth £1,500, and they are available to students who wish to study specific M level courses.

The Coleg Certificate in Welsh language skills

If you are studying at a Welsh University, how about taking advantage of the Coleg Cymraeg Cenedlaethol's Language Skills Certificate?

It's a chance to receive an extra certificate which shows future employers that you are confident and proficient in your written and oral Welsh language skills.

The College will arrange sessions at every university in order to prepare students to achieve the certificate and there are extra resources online.

You will need to complete a series of oral and written tasks before sitting an exam at your university in order to achieve this qualification.

Over 200 employers recognise the Certificate, including ITV Wales, The National Assembly for Wales, The Millennium Centre, National Resources Wales, and many more.

Lecturers

Swansea University takes pride in the Welsh-medium education which has been available at the university for decades, but following the appointment of a number of Welsh-medium lecturers sponsored by the Coleg Cymraeg Cenedlaethol we have been able to offer either a new or an enriched provision through the medium of Welsh in the following fields:

Here are the lecturers who are employed by the Coleg Cymraeg at Swansea University:

Dr Kate Evans

Lecturer in Geography
College of Science

Dr Heledd Iago

Lecturer in Medical Sciences
School of Medicine

Dr Aled Isaac

Lecturer in Physics
College of Science

Dr Eifion Jewell

Senior Lecturer in Engineering
The College of Engineering

Amanda Jones

Lecturer in Nursing
College of Human and Health Sciences

Dr Rhian Eleri Jones

Senior Lecturer in Welsh
College of Arts and Humanities

Dr Geraldine Lublin

Lecturer in Spanish
College of Arts and Humanities

Delyth Lloyd Griffiths

Lecturer in Social Work
College of Human and Health Sciences

Dr Gethin Matthews

National Lecturer in Historiography
College of Arts and Humanities

Dr Rhian Meara

Lecturer in Physical Geography
College of Science

Dr Alwena Morgan

Lecturer in Biomedicine
School of Medicine

Dr Sophie Smith

Lecturer in French
College of Arts and Humanities

Dr Gethin Rhys Thomas

Lecturer in Zoology
College of Science

Non Vaughan Williams

Lecturer in Digital Media
College of Arts and Humanities

Iwan Williams

Lecturer in Media and Public Relations
College of Arts and Humanities

Rachel Williams

Lecturer in Midwifery
College of Human and Health Sciences

Contact us:

For more information about the Coleg Cymraeg Cenedlaethol Branch at Swansea University, go to:

www.abertawe.ac.uk/academihywelteifi
or www.colegcymraeg.ac.uk/myfyrwyr

Follow us on Twitter:  @cangen_abertawe



Or contact Lois Griffiths, the Coleg Cymraeg Cenedlaethol Branch Officer

Email: abertawe@colegcymraeg.ac.uk

Phone: **01792 295895**

Socialising

The Student's Union

Swansea University has a very active union. You can join a variety of societies and clubs, attend numerous events such as the yearly Summer Ball, and receive advice and support for free. The Student's Union's Welsh Affairs Officer ensures that the voice of the Welsh and Welsh-medium student body is heard.

Y Gymdeithas Gymraeg (The Welsh Society)

Y Gymdeithas Gymraeg (The Welsh Society) (or the 'Gym Gym' as it's called) provides students with a great opportunity to make new friends. The Gym Gym meets regularly as a society by arranging numerous social events through the medium of Welsh, such as rugby trips, gigs and pub crawls. Visit The Gym Gym's Facebook page to discover more - www.facebook.com/pages/Gym-Gym-Abertawe



"The Welsh Society gives first and second language Welsh-speaking students a chance to socialise with each other. Last year, a wide variety of different events were arranged by the Gym Gym, such as trips to Edinburgh, the intercollegiate dance and Eisteddfod, pub crawls, a quiz for learners and a much more. This year, for the first time ever, Welsh-language sports teams were created at the University and so, some of the enthusiastic members of the Gym Gym formed a men's rugby team. The Welsh language is definitely used by a lot of Swansea University students and we hope that more Welsh speakers and learners will join the Gym Gym next year to strengthen the presence of the Welsh language!"

Alun Rennolf – Captain of the rugby team and secretary of the Gym Gym.



The Hoffi Coffi café

This is a café for Welsh speakers where you can relax with your friends and a cup of coffee. The Café is located in the library and events are regularly held here through the medium of Welsh. The café contains a mural featuring part of the poem written by Tudur Hallam, Professor of Welsh at the University, as a tribute to the late Professor Hywel Teifi Edwards.

Do you want to live with other Welsh language students?

Accommodation in Penmaen Hall at Singleton Campus is reserved for students who wish to live with other Welsh-language students. Similar opportunities are also available on the new Bay Campus.

"The 'Gym Gym' is a society for Welsh speakers at the university where we get together by arranging socials or crawls.

The members of the society arrange visits to events such as the Intercollegiate Eisteddfod, which will be held in Cardiff this year, as well as the Intercollegiate Dance which is held in Aberystwyth. This year, we will be going on a trip to watch one of the Six Nations games (in Paris or Dublin) and lots of different crawls will be arranged such as a 'Family Crawl' and a 'Character Crawl.'

The society's events are memorable and there is something for everyone to enjoy and there's plenty of fun to be had!"

**Trystan Gwyn
Gym Gym President**

Work experience, employability and international opportunities

A degree is important to ensure a good job, but employers look for far more than a degree when choosing which graduates to employ. Ensuring work experience and developing skills as you study and during the holidays will add to your ability to compete for jobs.

Academi Hywel Teifi has developed a new Welsh-medium module which is open to all Level 2 students, whatever their degree course. This module gives you an opportunity to take advantage of a Welsh-medium work experience placement in a field relevant to your degree, thereby developing crucial employability skills.

AHT200

WORK EXPERIENCE

20 CREDITS, SEMESTER 2

On this module you will spend a period of 10 days' work experience with an organisation, a charity, a business or a governmental institution in Wales. You will attend the placement one day a week throughout the term in order to develop employability skills and a comprehensive understanding of the world of work. There will also be lectures and seminars to improve your employability skills and enable you to make the most of your period of work experience, as well as preparing you to apply for jobs.

For further information, please e-mail:

ebostio Iestyn Llwyd:

i.llwyd@swansea.ac.uk

Swansea Employability Academy (SEA)

Swansea University has founded a new academy, Swansea Employability Academy, to support students who wish to increase their employability skills. The Academy promotes new initiatives, demonstrates good practice, and provides opportunities which will enable you to improve your skills and record your attainments by using the Higher Education Record of Achievement. Two schemes offered are the Swansea Paid Internship Network (SPIN) and the Week of Work (WoW) Visit www.swansea.ac.uk/employability-academy/ for more information

International opportunities

Studying abroad schemes give you an opportunity to gain valuable interpersonal and transferable skills, such as organising and planning, joint working, problem-solving and communicating. These days employers recognise how important it is for graduates to have an understanding of international issues or other cultures, and they expect it. As a result, the University offers various opportunities for you to study abroad as part of your degree or to take advantage of one of the summer programmes available. Swansea University has links with more than 100 partner universities and organisations around the world.

For further information about this scheme

and other opportunities contact the University's International Development

Office: studyabroad@swansea.ac.uk

Lauren - BA Welsh

"As a part of my course, I have had opportunities to go on work experience to Welsh language institutions. During my second year, Academi Hywel Teifi staff arranged some work experience for me at a Welsh language Primary school where I worked with children between the ages of three and eleven. Even though I have realised that I wouldn't like to teach in a primary school in the future, I believe that this experience has had a positive impact on me as this was my first real chance to use the language outside of the University, in a professional setting. I would advise every student to arrange work experience before leaving university so that they can develop their language skills, have a taste of life in the working world and increase their confidence by using their bilingual skills in as many different contexts as possible."



Carys - BA French

"I spent a year in Paris as part of my degree. I believe that this is how I have developed the confidence to speak French, and I would encourage anyone to go abroad as part of their course if they get the chance. The year abroad changed my character and I learnt a lot about myself as well as gaining life skills and unforgettable experiences. During my year abroad, I worked in a college where I taught English to students between 18 and 26 years old. This experience has confirmed that teaching is what I would like to do as a career but, before this, I am going back to France in August, for a year, where I will be working as an 'Au Pair' in order to continue to improve my French."



Gareth - BSc Geography

"Volunteering in Siavonga, south Zambia, whilst studying for my degree was a once in a lifetime opportunity and the visit will stay with me forever. It was a joy to work with the local community and share daily living experiences with the people of Siavonga. I would like to thank the team at Discovery, the university's volunteer-led charity, for the opportunity and I'd encourage other students to take advantage of the programme in future."



Student Opinions



“The best thing about the Adult Nursing course is the variety of opportunities we are given from completing academic work to being on clinical practice. I have been out on placement twice this year and I've nurtured and maintained new skills during both. I am currently studying a part of the course through the medium of Welsh and I use the Welsh language daily during my clinical placements. The ability to speak Welsh has been a great advantage to me while following this course.”

Aled Bryn
BSc Adult Nursing

“Personally, the best thing about studying in Swansea is being close to home but, at the same time, being far away enough to truly experience University life. I spent a year abroad as a part of my course where, instead of studying, I worked as a teaching assistant at a comprehensive school in Paris. The main objective of the job was to help students to improve their English whilst I improved my French. I had a great opportunity to improve my language skills by living in a new country and I experienced many things in a year that a lot of people will never experience in a lifetime. I was really fortunate to study a course which requires you to spend a year abroad and I believe that everyone should have a chance to do it at some point during their time at the University.”

Nia
LLB Law and French



I decided to come to Swansea University following a visit day I attended where I received information regarding a new course that caught my attention. I intended to continue my studies through the medium of Welsh therefore I decided to follow the BA Media and Public Relations through the medium of Welsh. I am extremely happy with the course and I know I definitely made the right decision. I felt at home instantly once I moved here, as if I was a part of a small community because the staff within the Academi are kind and always ready to help with any problems or issues. This is a unique and new course and the opportunities I've received so far have been excellent.

Cerian
BA Media and Public Relations

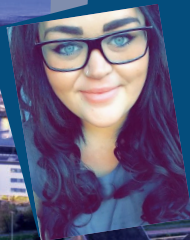
“I chose to study History at Swansea University because the department teaches topics that I dreamt of studying when I was at comprehensive school and sixth form. I also had an opportunity to study my course bilingually. In Wales today, jobs in the public sector appeal to a lot of graduates but having the ability to communicate through the medium of Welsh and English is a great advantage. The University has definitely prepared me for a career in the public sector and it is the reason why I am intending to complete a teacher training course or a Masters degree next year.”

Richard
BA History



“I decided to study Welsh at Swansea because I love the language and I come from an area where nearly everyone speaks it. The course opens your eyes and mind to every aspect of Welsh culture and Welsh traditions and the lecturers ensure that you have an understanding of the language too. As a result of studying at Swansea my confidence when I use the Welsh language in formal and informal situations has greatly increased. This is hugely important because, without doubt, fluency in Welsh and English will be advantageous and very useful in the workplace.”

Natalie
BA Welsh



“I was really interested in Law and the course is perfect for me as I am able to study parts of it through the medium of Welsh. Half of my seminars are taught in Welsh. The groups are smaller which is great because we receive more attention and help from the lecturers and the course moves quickly! Law is a course which helps individuals to develop a range of different skills from day one and these skills prepare you for the world of work.”

Gwennan
LLB Law



For further information, please contact:

Academi Hywel Teifi
Talbot Building
Swansea University
Swansea SA2 8PP

astudio@abertawe.ac.uk
+44 (0)1792 602070
www.abertawe.ac.uk/academihywelteifi

